


 STANDARD
CE
DATI TECNICI / TECHNICAL DATA
TENSIONI DISPONIBILI / AVAILABLE SUPPLY VOLTAGE

 12, 24, 48, 110, 230, 250 Vac 50/60Hz
 12, 24 Vdc

TEMPI-GIRO / TIME-TURN

 da 1s a 94h
 from 1s up to 94h

COPPIA / TORQUE

 da 4,8Ncm a 35Ncm (max)
 from 4,8Ncm up to 35Ncm (max)

ALBERO DI USCITA / OUTPUT SHAFT

 Tondo o sfaccettato $\varnothing=4 \times 8$ mm.
 Round or D-cut $\varnothing=4 \times 8$ mm.

AT

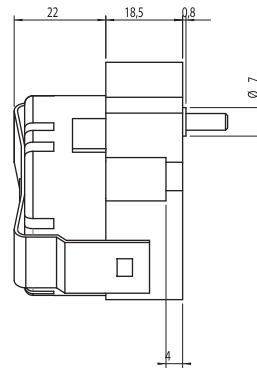
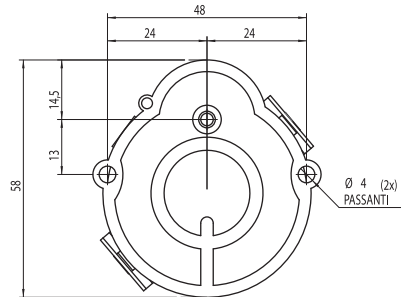
MOTORIDUTTORE CASE ALTO
HIGH CASE GEARMOTORS
DESCRIZIONE / DESCRIPTION

Motoriduttori adatti per movimentazioni a coppia ridotta. È disponibile una vasta gamma di riduzioni atte a soddisfare molteplici esigenze. Utilizzano i motori sincroni e in corrente continua descritti nel foglio tecnico relativo.

Gearmotor suitable for low torque needs. A large selection of reduction ratio is available to satisfy a wide range of application. The applied synchronous and DC motors are the same described in the related data sheets.

DIMENSIONI / DIMENSIONS

in mm


CODICE D'ORDINE ORDER CODE

 AT 000

DD	<i>rotation direction</i>	01	Clockwise
		02	Bidirectional
		03	Anticlockwise
		04	Bidirectional Vdc
		05	No sense
TTTT	<i>t.e.</i>	03S0	3 seconds
		60S0	60 seconds
		90M0	90 minutes
V		A	12V 50Hz
		B	24V 50Hz
		C	48V 50Hz
		D	110V 50Hz
		E	230V 50Hz
		F	12V 60Hz
		G	24V 60Hz
		H	48V 60Hz
		I	115V 60Hz
		Y	230V 60Hz
A		L	12Vdc
		M	24Vdc
		T	Round shaft $\varnothing 4 \times 8$ mm
		S	D-cut shaft $\varnothing 4 \times 8$ mm